

May 2023 >>>



- Financial Review
- 2022 Financial Highlights
- Electrical Safety Month
- Spring storm safety
- Holiday Closing Announcement



Serving Stanton County and parts of Madison, Wayne, Cuming, and Colfax counties

EnLIGHTening NEWS



About Us >>>

Stanton County Public Power District: Board of Directors

- Gary KoehlmoosPresident
- Weldon MarotzVice President
- Jim SchererSecretary
- Doug Oertwich.....Treasurer
- John GallDirector
- Bob Schellpeper.....Director

Contact Us:

Phone – (402)-439-2228 or (877)-439-2228
 Website: www.scppd.com
 Email: scppd@scppd.net
 Mail: PO Box 319, Stanton, NE 68779
 Office: 807 Douglas St. Stanton, NE
 Check us out on Facebook & Twitter

Report an Outage:
877-439-2300
for after hours service

2022 Financial Review

Continuing Reliable and Affordable Energy



The books are closed for another fiscal year at Stanton County PPD and the District is in a strong financial position. The Board of Directors, management team and employees have all worked to keep Stanton County PPD in a good financial position and ready to serve its customers. We are carefully balancing adequate reserves for unexpected expenses such as storm damage. We also need to have the resources to build infrastructure for new electric load that is built in the District or expansion of existing customers. We also must keep the rates affordable and competitive for our customers.

See page 2 for some of the highlights of 2022

2022 Annual Financial Report >>>

Energy Sales

The sales in 2022 were just slightly below the previous year ranking the 2nd highest in the history of the District. The total energy sales were over 159 million kWh. The overall Large Commercial rate class is by far the largest revenue class followed by residential

Revenue

The revenue from near record sales was slightly under the 2018 revenue totals. The overall revenue is down due to the refund of the Power Cost Adjustment (PCA) credit that was passed through to customers. With adequate cash balances we were able to keep rates flat for 2022.

PCA Refunds

In 2022, the District passed the PCA credit through as a credit for most of our customer's bills. This credit is earned per kilowatt consumed by each customer. Customers who received the PCA credit must have measured energy usage, a revenue meter for the amount and, an electric service contract that allows the service to receive the PCA credit. The 2022 PCA was over \$1M dollars.

Cost of Electric Service

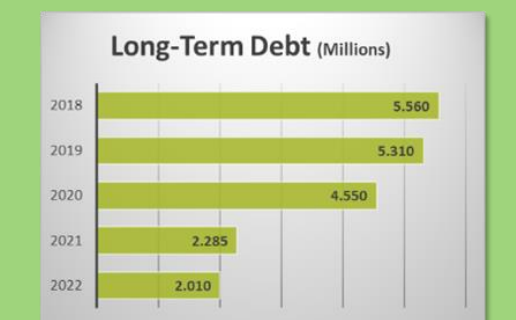
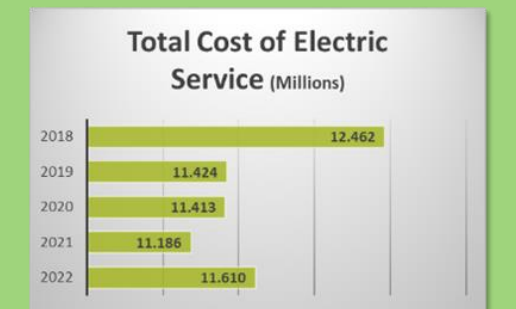
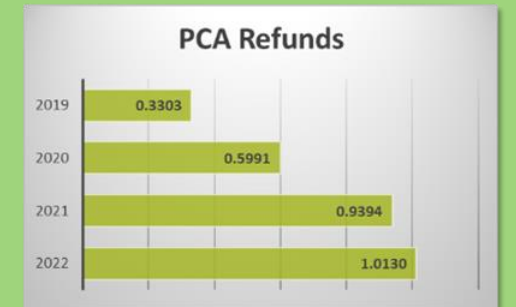
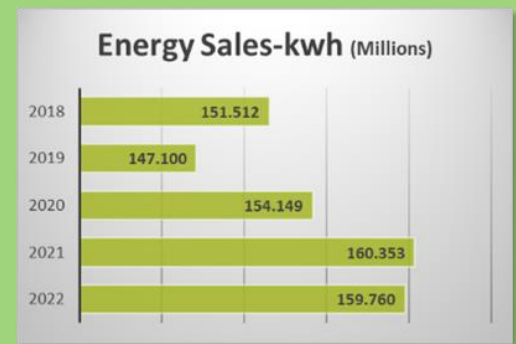
The Total Cost of Electric Service is lower over the last 4 years primarily due to the reduction in power costs. The cost of wholesale power is over 70% of our total expenses. The remaining expenses have seen upward pressure from the extremely high inflation in 2022. Our ability to control these costs without sacrificing reliability is an ongoing challenge for our team!

"We hope to maintain our strong financial position in a time when the cost of everything is going up. We are always looking for ways to maintain reliability and keep your power costs affordable."

General Manager, Chad Waldow



To summarize 2022, the District made the necessary investments in plant replacement and various maintenance projects to maintain reliability for our customers. Rates remained flat and the PCA credit was passed through to most of our customers. Long-term debt continues to be reduced and capital projects continue to be financed with cash. The District is in a strong financial position and poised for another good year in 2023.



Storm Clean up & Chainsaw usage

Each year, approximately 36,000 people are treated in hospital emergency departments for injuries caused by using chainsaws. The potential risk of injury increased after storms pass and chainsaws are used to remove fallen trees or branches.

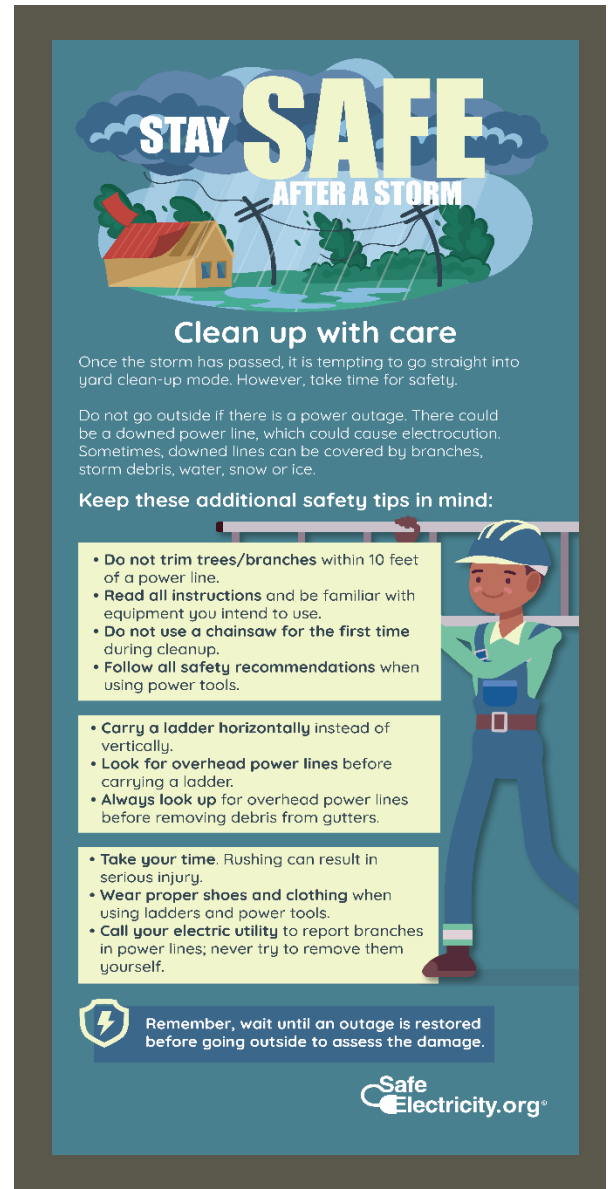
Aside from serious injury or electrocution from contact with or getting too close to an overhead power line or other electrical source, the three most common injuries from chainsaws are caused by kickback, binding and pull-in.

Kickback occurs when the chain's teeth catch on something as they rotate around the tip of the blade. It may also happen when the nose strikes another object, starts to bore a cut improperly or catches the bottom or side of a cut while being reinserted.

Binding (or pinching) occurs when the material clamps down and stalls the cutting chain.

Pull-in happens when the chain at the bottom of the bar stops suddenly due to pinching or striking a foreign object, which can draw the saw forward.

- ✓ When using a chainsaw on a job or at home, always wear protective clothing and glasses.
- ✓ Be sure that bystanders maintain a safe distance from cutting activities.
- ✓ Take extra care when cutting branches that have been bent, twisted, hung up on or caught under another object under high wind.
- ✓ Realize that branches and trees react in different ways when they are cut, be prepared.



STAY SAFE AFTER A STORM

Clean up with care

Once the storm has passed, it is tempting to go straight into yard clean-up mode. However, take time for safety.

Do not go outside if there is a power outage. There could be a downed power line, which could cause electrocution. Sometimes, downed lines can be covered by branches, storm debris, water, snow or ice.

Keep these additional safety tips in mind:

- Do not trim trees/branches within 10 feet of a power line.
- Read all instructions and be familiar with equipment you intend to use.
- Do not use a chainsaw for the first time during cleanup.
- Follow all safety recommendations when using power tools.

- Carry a ladder horizontally instead of vertically.
- Look for overhead power lines before carrying a ladder.
- Always look up for overhead power lines before removing debris from gutters.

- Take your time. Rushing can result in serious injury.
- Wear proper shoes and clothing when using ladders and power tools.
- Call your electric utility to report branches in power lines; never try to remove them yourself.

Remember, wait until an outage is restored before going outside to assess the damage.

Safe Electricity.org

Electrical Safety Month>>>>

Electricity lights homes and businesses, provides warmth and keeps appliances and equipment running smoothly. During Electrical Safety month, SCPPD and Safe Electricity provide safety tips to avoid hazards both inside and out.

Staying safe outside:

- Always be aware of overhead and underground power lines.
- Make sure all outside outlets are ground-fault circuit interrupter (GFCI) protected.
- Before digging, call 8-1-1 for locating services on any underground infrastructure.
- When you see lightning, take shelter inside the house, shop or hard topped vehicle for protection.



Staying safe inside:

- Have a qualified electrician/licensed contractor check for hazards if you notice any of the following: dimming lights, a sizzling or buzzing sound. The smell of warm plastic, a switch plate that feels warm or looks scorched, sparks in an outlet
- Do not overstretch a cord or use frayed or damaged cords.
- During storms, unplug appliances and electronics to avoid possible lightning damage.

Office Closed

The SCPPD office will be closed Monday, May 29, 2023
for the Memorial Day holiday.

*We remember and honor those who lost their lives and could not
come home, reflecting on their service and why we have the
luxury and freedom that we enjoy today.*



It's the Law – Call
Before You Dig!
1-800-331-5666



877-439-2228 www.scppd.com scppd@scppd.net
Like us on Facebook

For valuable, timely information on power outages or important updates;
follow us on Twitter! @StantonCoPPD

